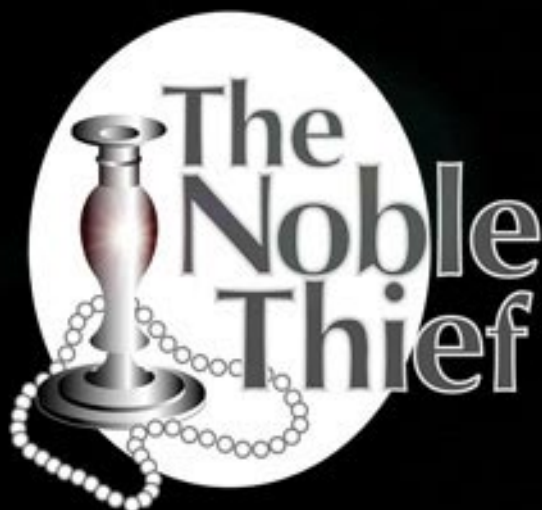




**Imagine an audience
attending a theatrical musical...**

Now, imagine
the audience
learning
about the
Bahá'í Faith.



"In all their efforts to achieve the aim of the Four Year Plan, the friends are also asked to give greater attention to the use of the arts, not only for proclamation, but also for the work in expansion and consolidation. The graphic and performing arts and literature have played, and can play, a major role in extending the influence of the Cause. At the level of folk art, this possibility can be pursued in every part of the world, whether it be in villages, towns or cities. Shoghi Effendi held high hopes for the arts as a means for attracting attention to the Teachings. A letter written on his behalf to an individual thus conveys the Guardian's view: 'The day will come when the Cause will spread like wildfire when its spirit and teachings will be presented on the stage or in art and literature as a whole. Art can better awaken such noble sentiments than cold rationalizing, especially among the mass of the people.'"

(21 April 1996, by the Universal House of Justice to the Bahá'ís of the World)

The 1996 Ridván message of the Universal House of Justice to the Bahá'ís of the World called attention to the importance of the arts, especially the graphic and performing arts and literature, in the proclamation, expansion and consolidation of the Bahá'í Faith. This reference concerning the importance of the arts has encouraged the friends in many countries to initiate and pursue activities to use various forms of art in promoting the teaching work.

Designed to teach and proclaim the message of Bahá'u'lláh, *The Noble Thief* is a new hour-long musical that is spreading like wildfire. The play tells the story of an arrogant burglar that attends a fireside to scout for valuables... and is transformed into a lover of Bahá'u'lláh through the patience and kindness of his new Bahá'í friends.

Through dramatic acting, song and humor, all audiences identify with the main character's recognition of the social ills of the world today and society's yearn for something more. Appropriate for non-Bahá'ís, seekers, Bahá'ís and children, *The Noble Thief* is a one-man musical written and performed by veteran actor Chris Hampton, graduate of the American Musical and Dramatic Academy in New York. Created as a traveling production, it is complete with its own sound system and music and is available to be performed in any city, conference, teaching project or fireside.

The Noble Thief



Summary of The Noble Thief

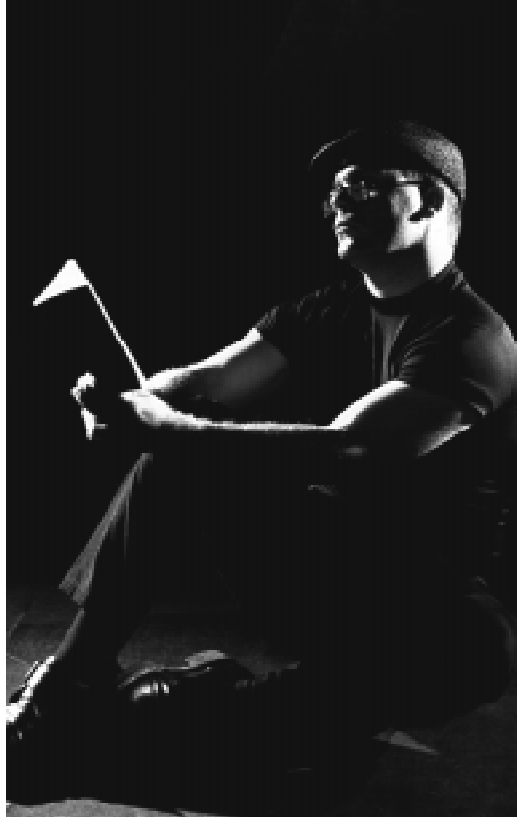
As the play opens, we are introduced to Stuart when he enters his basement apartment carrying stolen items from his evening's local neighborhood thefts. He speaks to himself and to his friends in the apartment, the audience, about his exceptional skills in his shady profession and justifies his actions by his environment, coping with his life by blaming it on others. [*sings "Blame it on Another"*].



He displays his resentment for his father, who spent little time with him before passing away, and curses the world's depraved social ills and its hypocritical nature. He insists that society is suffering and is in need of something more. [*sings "Cryin' Out"*]

Stuart confesses that he met an interesting girl, Mona, in a coffee shop who claimed to have some different answers about the world and she invited him to a fireside to learn more about a new religion. He scoffs the idea of a "new religion", but decides to attend, not as a seeker - but to scout out the interior of the home for a future burglary.

After returning from the fireside, he speaks of his mixed emotions in response to the oddly diverse group welcoming him with open arms and the young well-mannered boy who befriended him and read a prayer for the group [*sings "Spiritual Qualities Prayer"*]. He talks of Mona's father, Mr. Rowhani, who quickly becomes a mentor to Stuart and provides him with friendship and love. Stuart rejects the validity of this new religion, the Bahá'í Faith, on the basis that it is too good to be true, but bathes in its wonder [*sings "What if it Were True?"*] and decides to return to Mona's home for another meeting.



Elated by these new found truths, Stuart stays up all night reading about the Bahá'í Faith and is bursting with excitement [*sings "Can you Believe..."*] only to shamefully confess that the previous evening that he and his seedy cohort, Tony, carried out the original plan and robbed the Rowhani home in the early hours. Stuart recounts the robbery in disgust but anonymously returns all of the stolen goods, vowing to never steal from anyone again. Stuart is later visited by Mr. Rowhani who kindly focuses Stuart's attention on the station of Bahá'u'lláh, while leaving with Stuart as a gift, one of the returned stolen items. Stuart is profoundly moved [*sings "Bahá'u'lláh"*].

Months later, Stuart has a new life as an active Bahá'í and a job as a store manager. He speaks of a dream he had of his father and has begun to heal old wounds by hoping that his father has passed on some of his good qualities to him [*sings "Some of You"*]. Stuart suddenly learns that Mr. Rowhani passed away the night before and is heartbroken, but remembers the example Mr. Rowhani set and decides to move away in his stead to a pioneering post [*sings "Fruits of His Work"*].

How Can The Noble Thief Be Effective?

Public Firesides In lieu of a speaker, treat the seekers to song and drama. They will watch the main character discover the Bahá'í Faith and identify with his levels of reaction and transformation.

Conferences & Summer Schools More than just entertainment, remind the friends of the power of the arts and the prophetic role it will play in assisting the Cause to spread like wildfire. It will empower other artists and youth as well as invigorate everyone present.

Teaching Projects As you teach and consolidate, invite the new friends to a showing of The Noble Thief so that they may hear Bahá'u'lláh's name in song.

Race Unity Events The Noble Thief integrates well in a program of other performers. The play makes mention of race unity and a diverse Bahá'í community.

Youth Training The energy of youth workshops is turning to stage and drama to depict the Bahá'í Faith's history and teach the masses of Bahá'u'lláh.

Holy Days The main character pays reverent tribute to Bahá'u'lláh and the play would be an appropriate display for your community's commemorations. Invite the public.

Public Theatrical Event The Noble Thief can stand on its own as a featured musical production. Invite the public and advertise in the media and present the play as a free work of art to your city -- provide refreshments, hospitality and discussion for those who stay after the play.



How Can We Bring The Noble Thief To Us?

Contact Chris Hampton to arrange a date(s) . You can arrange for multiple performances, if needed.

Chris Hampton
(954) 568-6551
chris@globweb.com
www.artsforpeace.com

The play can performed wherever there is a grounded electrical outlet and a minimum stage area of twelve square feet. Because of this flexibility, The Noble Thief can be performed in small halls, large living rooms and around outside yards. However, the play is much more effective if the setting is a raised stage with lighting that is separate from house lights. A true theater is ideal, but university lecture rooms, library stages, VFW halls and elementary school stages will provide these needs and can easily be obtained.

The performance is free to you, but expenses must be covered: travel and hospitality. A round-trip coach plane ticket for one person from Fort Lauderdale, Florida; a place to stay overnight and someone to pickup and deliver to the airport are the minimum needs. We are extremely flexible and always wish to discuss ways to keep these expenses as low as possible.

We will need a volunteer tech person to run the music for the show. This does not need to be an individual trained in technical aspects, just someone comfortable to start and stop the music and adjust volume levels. We would like to be able to gain entrance into the performance hall three hours prior to showtime to setup and fully train your tech person.



What Does The Noble Thief Provide?

Full sound equipment, microphone, mixing board and CD player are a part of the play's standard equipment powerful enough for an audience of hundreds. However, if your hall contains state-of-the-art sound equipment, it would assist us if we bring only what is needed. Put simply..."you provide the hall and the audience, we provide everything else".

Once your date is scheduled, you will receive promotional material free of charge to assist you. These items are designed professionally and can be duplicated on any photocopy machine:

- **A Promotional Poster**

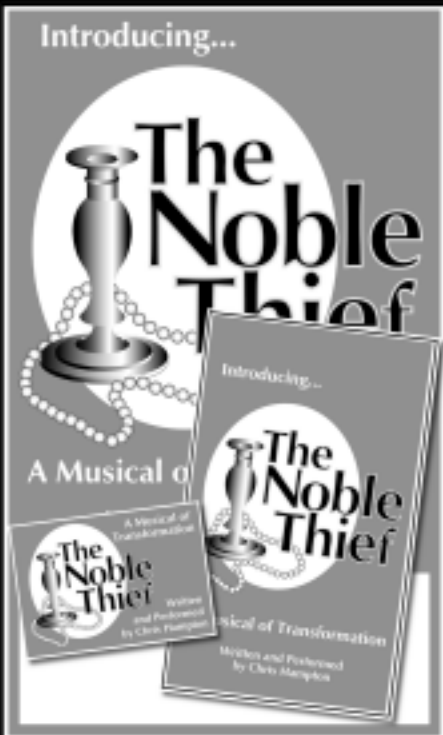
Size 8 1/2 X 14 with the Noble Thief logo and adequate space at the bottom to detail time, place and other local details.

- **Invitation Post Card**

Size 4 1/4 x 5 1/2 inch card with the Noble Thief logo to be duplicated and mailed to your mailing lists to ensure an audience at the event.

- **A Program of the Event**

For the audience's hands: the actual play's program contains the Noble Thief logo, synopsis of scenes, Bahá'í quotations contained in the play, a short introduction to the Bahá'í Faith and Bahá'í contact information, allowing space for your own local information.



About Chris Hampton...

Chris Hampton has been involved in theater since his childhood, when he began acting side-by side with his father in community theater and in vocal performances. Chris graduated from the prestigious American Musical and Dramatic Academy located in New York. He lived and worked in New York for several years, part of the time as lead vocalist for "Ocean Ave," a rock band cited for its vitality and excellence. In any performance Chris's accomplished acting and fluid vocals convey an intimacy, immediacy, and honesty that connect with each person in the audience.

Chris owns a website design business and pursues the arts as a passion. "The Noble Thief" is his first play and its contemporary rock music is his most extensive composition to date.

Raised in a Bahá'í family, Chris served for two and a half years at the Bahá'í World Center in Haifa, Israel and now resides in Fort Lauderdale, Florida.

